

Floor Graphics

Preparation Guide

SIGNWAVE
So much more than signs.™

CONDITION OF FLOOR APPLICATION SURFACES

In general, the floor surface must be secure and in good condition.

- Avoid installing floor graphics over loose tile.
- Avoid installing floor graphics over uneven tile.
- Be sure the floor finish is well bonded to the floor surface. Floor finishes that are not well-bonded to the surface may separate or release, resulting in premature lifting of the graphic. In addition, the floor finish may come off with the graphic when the graphic is removed, requiring the reapplication of the floor finish. Some types of floor finishes include concrete sealer, wood sealer, paint, and wax.
- Properly clean the floor surface, including removing any silicone coatings, except in grout line area of tile.
- The floor surface application temperature range is 10° to 38°C.

Approved Floor Application Surfaces

- ✓ Waxed vinyl
- ✓ Sealed concrete
- ✓ Marble
- ✓ Ceramic tile
- ✓ Sealed wood
- ✓ Unsealed concrete outdoors



LOCATION OF FLOOR GRAPHICS

CAUTION Any floor surface, including floor graphics, that is wet due to rain, snow or other contaminants may become slippery. To avoid personal injury due to slipping:

- Place floor graphics far enough away from entryways that they stay dry.
- Use doormats to reduce moisture at entryways.
- Clean up water, spills or other contaminants immediately.
- Floor graphics may be damaged by pallets or heavy equipment, such as forklifts, as well as by dragging heavy items across the top of the graphic. If possible, locate floor graphics out of the main stream flow of pallet or heavy equipment traffic. Minor edge chipping is unavoidable.

If you require further assistance, please
contact your local SIGNWAVE centre

SWA_2020

Floor Graphics

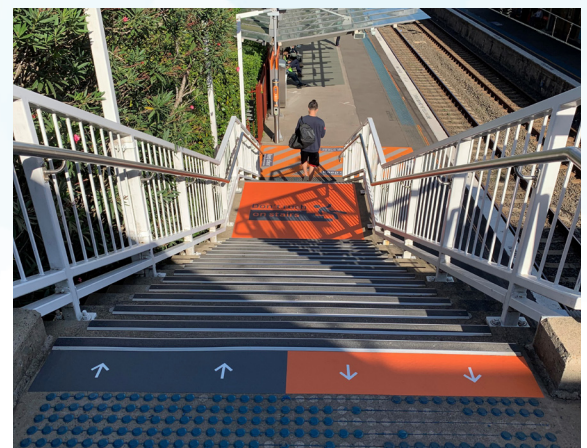
Preparation Guide

SIGNWAVE
So much more than signs.™

SURFACE PREPARATION

All floor surfaces must be cleaned prior to applying floor graphics, including surfaces that are sealed, waxed or painted. To clean the floor, use the following procedure:

1. Spray the floor area where the graphic will be applied. Use a solution of 20 drops of detergent
2. 400 ml of water. Do not use soaps or enzyme detergents.
3. Clean an area that is 15 to 20 cm larger than the graphic.
4. Wipe the floor clean and then dry it with a lint-free paper towel. Be sure you remove all soil and grit. Use a hard bristle broom and blower to remove any ground in dirt.
5. Remove any oil or grease by wiping the floor with a clean, lint-free paper towel that has been moistened with rubbing alcohol that contains no lotions. To avoid leaving a residue, wipe the surface completely dry with a lint-free paper towel before the alcohol evaporates.



☒ Checklist

- ☐ Is the floor surface in good condition?
- ☐ Is the floor surface well bonded?
- ☐ Has the floor surface been thoroughly cleaned?
- ☐ Has proper consideration been given to the safety of the floor graphic location?

If you require further assistance, please
contact your local SIGNWAVE centre

SWA_2020